

# Roadway Markings

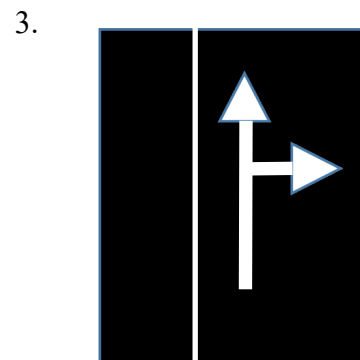
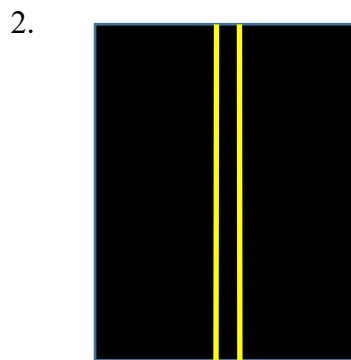
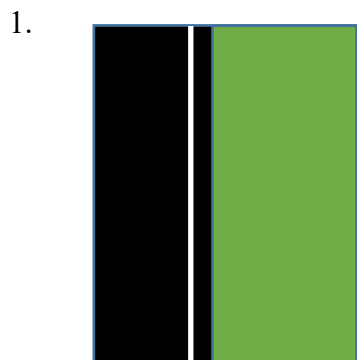
## Type Of Roadway Marking

## Roadway Marking Explanation

|  |  |
|--|--|
| <ol style="list-style-type: none"> <li>1. High Occupancy Vehicle Lane</li> <li>2. Highway Exit Ramp</li> <li>3. Pedestrian Crossing</li> <li>4. Railroad Crossing</li> <li>5. School Crossing</li> <li>6. Shared Left Turn Lanes</li> <li>7. Stop Line</li> <li>8. Yellow Double Line</li> <li>9. Yellow Double Lines Solid &amp; Broken Left</li> <li>10. Yellow Double Lines Solid &amp; Broken Right</li> <li>11. Yellow Single Line Broken</li> <li>12. White Arrow Turn Left</li> <li>13. White Arrow Turn Left or Straight</li> <li>14. White Arrow Turn Right</li> <li>15. White Arrow Turn Right or Straight</li> <li>16. White Line Broken</li> <li>17. White Line Solid</li> </ol> | <ol style="list-style-type: none"> <li>A. Warning of people crossing the roadway</li> <li>B. Must turn left</li> <li>C. May pass with no oncoming traffic</li> <li>D. Mass pass; moving in the same direction</li> <li>E. Reserved for high-traffic vehicles</li> <li>F. May turn left or go straight</li> <li>G. Where to stop at stop sign or traffic light</li> <li>H. Marks the edge of a roadway</li> <li>I. May pass, but oncoming traffic cannot pass</li> <li>J. Must turn right</li> <li>K. Used by traffic in both directions for turning</li> <li>L. May turn right or go straight</li> <li>M. No passing allowed</li> <li>N. Dangerous &amp; illegal to cross; Used to exit</li> <li>O. May not pass, but oncoming traffic may pass</li> <li>P. Watch for children in this area</li> <li>Q. Warning of a train crossing the roadway</li> </ol> |
|--|--|

I. From the list of NUMBERS, indicate the type of roadway marking illustrated.

II. From the list of LETTERS, indicate what the roadway marking represents.



Type : \_\_\_\_\_

Represents : \_\_\_\_\_

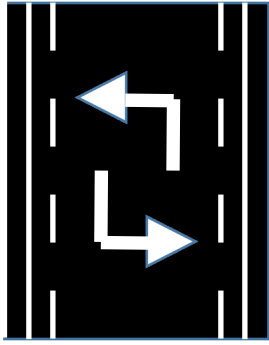
\_\_\_\_\_

\_\_\_\_\_

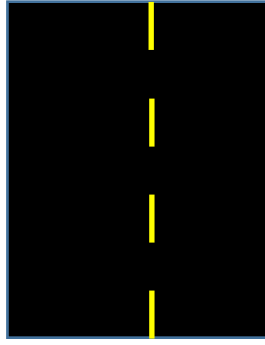
\_\_\_\_\_

\_\_\_\_\_

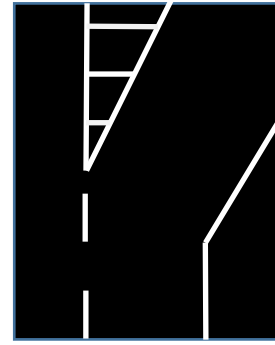
4.



5.



6.



Type :

\_\_\_\_\_

\_\_\_\_\_

\_\_\_\_\_

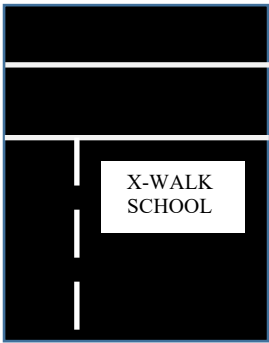
Represents :

\_\_\_\_\_

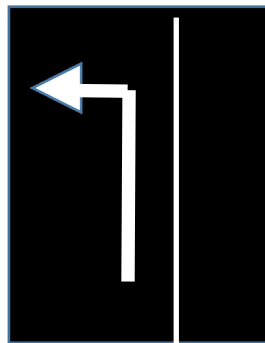
\_\_\_\_\_

\_\_\_\_\_

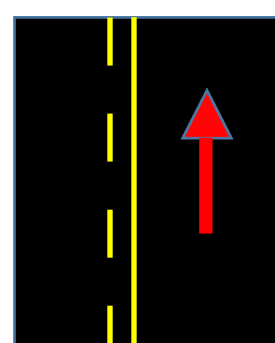
7.



8.



9.



Type :

\_\_\_\_\_

\_\_\_\_\_

\_\_\_\_\_

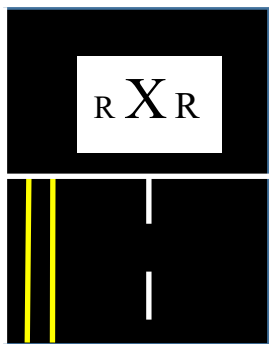
Represents :

\_\_\_\_\_

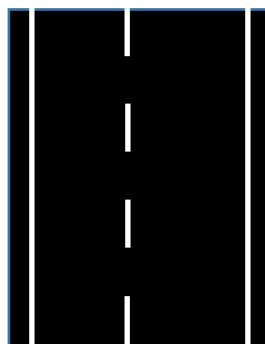
\_\_\_\_\_

\_\_\_\_\_

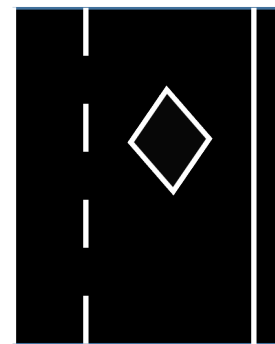
10.



11.



12.



Type :

\_\_\_\_\_

\_\_\_\_\_

\_\_\_\_\_

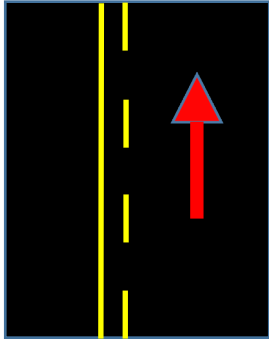
Represents :

\_\_\_\_\_

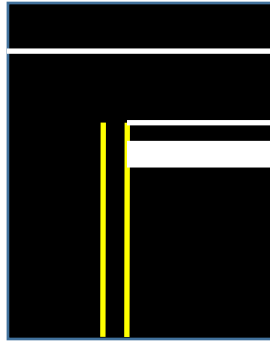
\_\_\_\_\_

\_\_\_\_\_

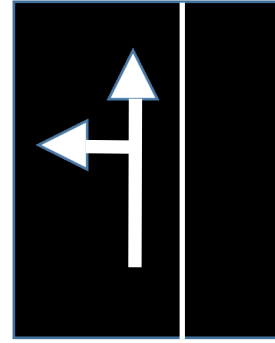
13.



14.



15.



Type : \_\_\_\_\_

Represents : \_\_\_\_\_

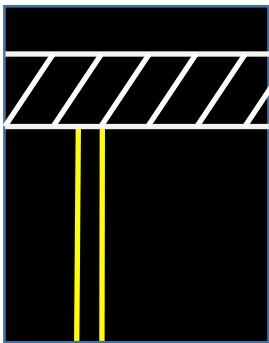
\_\_\_\_\_

\_\_\_\_\_

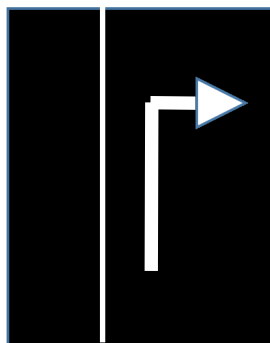
\_\_\_\_\_

\_\_\_\_\_

16.



17.



Type : \_\_\_\_\_

Represents : \_\_\_\_\_

\_\_\_\_\_

\_\_\_\_\_